

EMBRACE THE SPACE

RETURN TO SPECIAL EVENTS



EMBRACE THE SPACE

IN THESE TIMES, MORE SO THAN EVER BEFORE, OUR INDUSTRY IS CHALLENGED TO ENSURE THE HEALTH AND SAFETY OF OUR GUESTS WHILE OFFERING A COMFORTABLE SPACE FOR MEMORABLE EXPERIENCES TO TAKE PLACE. OUR INDUSTRY IS EXPECTED TO ADAPT TO SOCIETY'S "NEW NORMAL." AT LAFC WE SEE THIS CHALLENGE AS OUR OPPORTUNITY AND ARE NOT SATISFIED WITH NORMALCY BUT AIM TO DELIVER EXTRAORDINARY EXPERIENCES FOR ALL OF OUR GUESTS THROUGH THE IMPLEMENTATION OF PROGRESSIVE PRACTICES. SO FROM OUR TEAM TO YOURS, WE ASK YOU TO JOIN US AS WE EMBRACE THE SPACE.



STRATEGIES



SANITATION



FACILITY
UPGRADES



STAFF
PROTOCOL



SPATIAL
DESIGN



GUEST
EXPERIENCE



FOOD &
BEVERAGE



BROADCAST &
PRODUCTION

SANITATION

ENHANCED PROCEDURES / SAFE MEASURES



- ALL SPACES ARE DEEP CLEANED BEFORE, DURING AND AFTER EACH EVENT WITH HOSPITAL GRADE, EPA REGISTERED DISINFECTANTS.
- AUTOMATIC HAND SANITIZING STATIONS ARE AVAILABLE THROUGHOUT THE STADIUM.
- NEW TECHNOLOGY HAS BEEN ADAPTED TO OUR DAILY SANITATION PROCEDURES SUCH AS ELECTROSTATIC SPRAYER, SURFACE FILMS, AND SHOE DISINFECTANT MATS.
- BANC OF CALIFORNIA STADIUM IS IN THE PROCESS OF OBTAINING THE GLOBAL BIORISK ADVISORY COUNCIL (GBAC) GOLD STAR ACCREDITATION. THIS ACCREDITATION MEANS THAT A FACILITY HAS:
 - ESTABLISHED AND MAINTAINED A CLEANING, DISINFECTION, AND INFECTIOUS DISEASE PREVENTION PROGRAM TO MINIMIZE RISKS ASSOCIATED WITH INFECTIOUS AGENTS LIKE THE NOVEL CORONAVIRUS (SARS-COV-2).
 - PROPER CLEANING PROTOCOLS, DISINFECTION TECHNIQUES, AND WORK PRACTICES IN PLACE TO COMBAT BIOHAZARDS AND INFECTIOUS DISEASE.
 - HIGHLY SKILLED CLEANING PROFESSIONALS WHO ARE TRAINED FOR OUTBREAK AND INFECTIOUS DISEASE PREPARATION AND RESPONSE.

FACILITY UPGRADES

PROTECTION / WELL-BEING



- FACILITY UPGRADES INCLUDE AUTOMATIC FAUCETS, SOAP DISPENSERS, PAPER TOWEL DISPENSERS, FLUSH VALVES AND LIGHT SWITCHES, UV LIGHTS.
- HVAC IMPROVEMENTS INCLUDE INCREASED FILTER RATING ALONG WITH ADDITIONAL PORTABLE AIR FILTRATION UNITS.
- SELECTED ABM GREENCARE® EQUIPMENT IMPROVES INDOOR AIR QUALITY AND INCREASES SAFETY.
- DOOR STOPS HAVE BEEN INSTALLED TO LIMIT CONTACT WITH DOOR HANDLES.
- GLASS WALLS AND WINDOWS WILL OPENED AND RETRACTED IN ANY INDOOR SPACES WHERE POSSIBLE TO INCREASE OVERALL AIR FLOW.

STAFF PROTOCOL

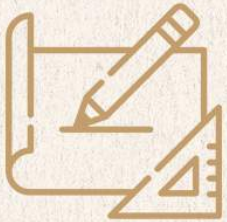
TRAINING / PLANNING / PREVENTION MEASURES



- STAFF IS TRAINED ON HEALTH AND SAFETY PRECAUTIONS AND WILL FOLLOW ALL RELEVANT LOCAL, STATE, AND FEDERAL REGULATIONS
- STAFF WILL BE SUBJECT TO ON-GOING HEALTH VERIFICATION PROTOCOLS INCLUDING BUT NOT LIMITED TO:
 - ELEVATED TEMPERATURE CHECK
 - HEALTH QUESTIONNAIRE AND ACKNOWLEDGMENT
 - COVID-19 TESTING (IF REQUIRED)
- STAFF REQUIRED TO WEAR FLUID RESISTANT GLOVES (NITRILE OR NON-LATEX) AND FACE MASKS (SURGICAL OR CLOTH).
- PPE IS READILY AVAILABLE FOR ALL STAFF AND ADEQUATE LEVELS OF INVENTORY ARE KEPT AT ALL TIMES.
- STAFF CONDUCTING ENHANCED CLEANING AND DISINFECTING TASKS HAVE BEEN PROPERLY TRAINED IN THE CORRECT USE OF NECESSARY PPE AND CLEANING DISINFECTANTS FOR THEIR DIRECTED TASK.
- STAFF WILL OBSERVE PHYSICAL DISTANCING MEASURES ON PROPERTY OUTSIDE AND INSIDE THE STADIUM.

SPATIAL DESIGN

SITE PLANNING / EVENT SPACE



- EVENT SPACES SET UP FOR OPTIMAL SPATIAL DESIGN BASED ON LA COUNTY HEALTH GUIDANCE!
- CUSTOM DESIGNED DIAGRAMS TO INDICATE PRE-ASSIGNED NUMBERED SEATS.
- SPACES ALLOW FOR AN ORGANIZED AND STAGGERED EVENT ARRIVAL AND DEPARTURE.
- DESIGNATED PATHS FOR INGRESS AND EGRESS TO PROVIDE A COMFORTABLE AND SAFE GUEST FLOW.
- DESIGNATED QUEUING AREAS FOR BATHROOMS AND FOOD STATIONS WILL BE CLEARLY MARKED.

GUEST EXPERIENCE

SAFETY / COMFORT / COMMUNICATION



- PERSONAL PROTECTIVE EQUIPMENT ARE AVAILABLE FOR EVENT GUESTS.
- REDUCED VENUE GUEST SEATING TO MAINTAIN CURRENT PHYSICAL DISTANCING GUIDELINES.
- GUESTS ARE ASSIGNED AN ENTRANCE BASED ON EVENT SPACE.
- COMPLIMENTARY AUTOMATIC HAND SANITIZING STATIONS AVAILABLE AT ENTRANCES AND EVENT SPACES.
- ANY AREAS WHERE GUESTS QUEUE (ENTRANCES, RESTROOMS) WILL BE CLEARLY MARKED WITH THE USE OF BARRIERS, SIGNAGE AND STICKERS, AND MONITORED TO ENSURE PHYSICAL DISTANCING GUIDELINES.
- GUEST SAFETY GREETER TO COMMUNICATE NEW SAFETY PROTOCOLS AND EVENT EXPERIENCE TO GUESTS.

FOOD & BEVERAGE

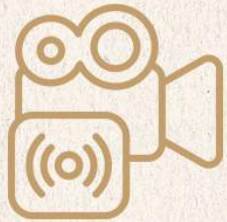
HIGH-QUALITY / CONTACTLESS



- MEALS AND CUTLERY ARE TASTEFULLY PACKAGED FOR INDIVIDUAL CONSUMPTION.
- SAFE SERVICE OPTIONS AVAILABLE – CONTACTLESS SERVICE (GRAB & GO) OR CULINARY ATTENDED SERVICE (SHIELDED STATIONS).
- MENUS HAVE BEEN REIMAGINED BASED ON QUALITY INGREDIENTS THAT MINIMIZE CONTACT IN KITCHEN PREPARATION AREAS.
- FOOD CONTACT SURFACES AND ITEMS ARE SANITIZED AND DISINFECTED AFTER EACH USE.
- KITCHENS ARE DEEP CLEANED AND DISINFECTED SEVERAL TIMES THROUGHOUT THE DAY.
- DINING TABLES AND CHAIRS DISINFECTED AFTER EACH GUEST USE.

BROADCAST & PRODUCTION

TECHNOLOGY / CONTENT / INNOVATION

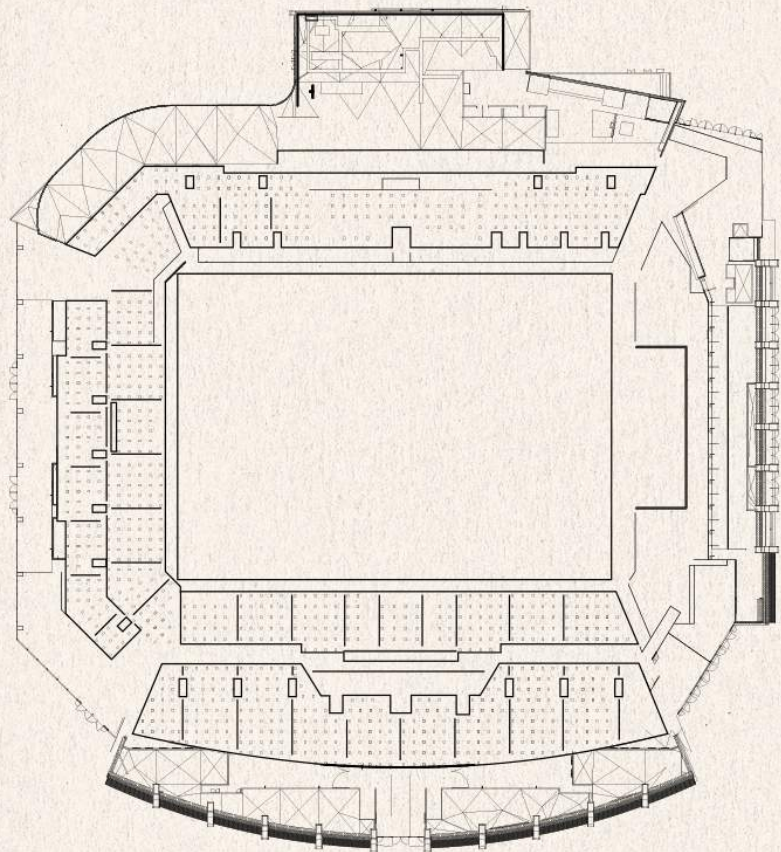


- FIELD BOARDS AND TVS ARE AVAILABLE FOR LIVE STREAM AND CUSTOM GRAPHICS.
- STREAMING SERVICES ARE AVAILABLE VIA BUILT-IN TECHNOLOGY.
- NORTH LED VIDEOBOARD, SOUTH LED VIDEOBOARD, FIELD RIBBONS, 2ND STORY RIBBONS ARE AVAILABLE AROUND THE BOWL SEATS AND ARE ALSO VISIBLE FROM ALL PREMIUM CLUB SPACES.
- 446 IPTVS ARE AVAILABLE THROUGHOUT THE STADIUM.

CHOOSE YOUR SPACE

BOWL SEATS

OPEN AIR

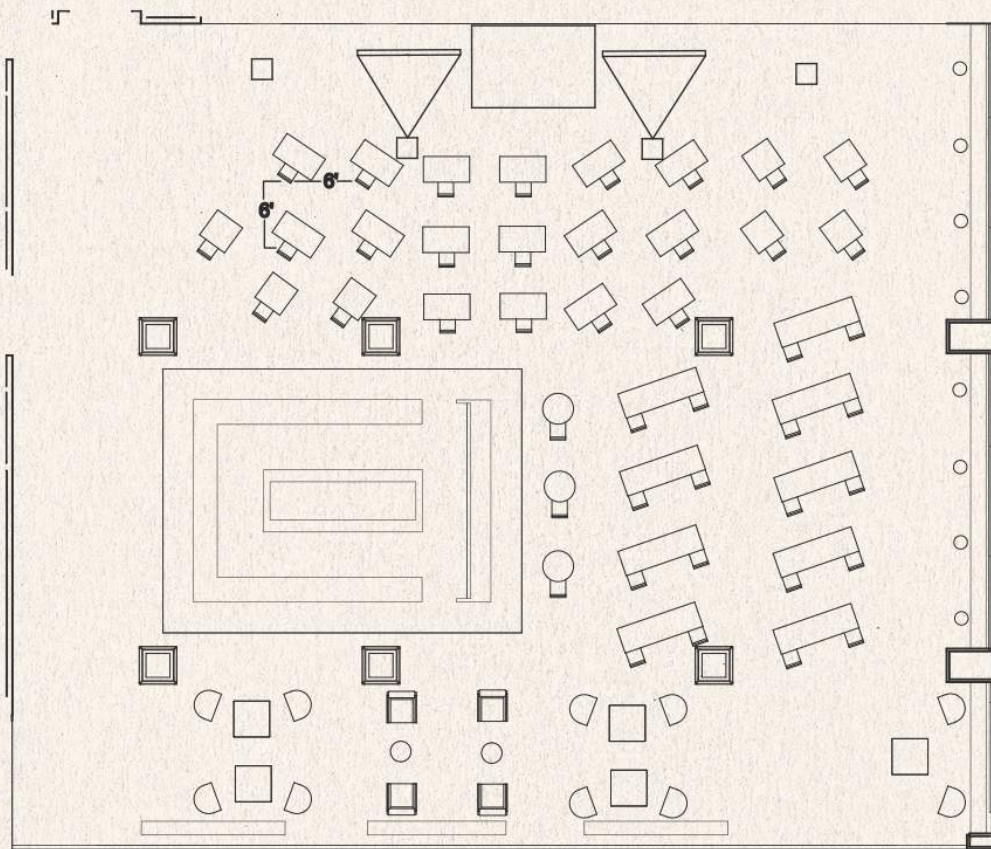


EMBRACE THE SPACE



FIELD CLUB

PLAYER WALKOUT LEADS TO THE FIELD AND BOWL SEATS
CREATING A COMBINED INDOOR AND OUTDOOR EXPERIENCE.

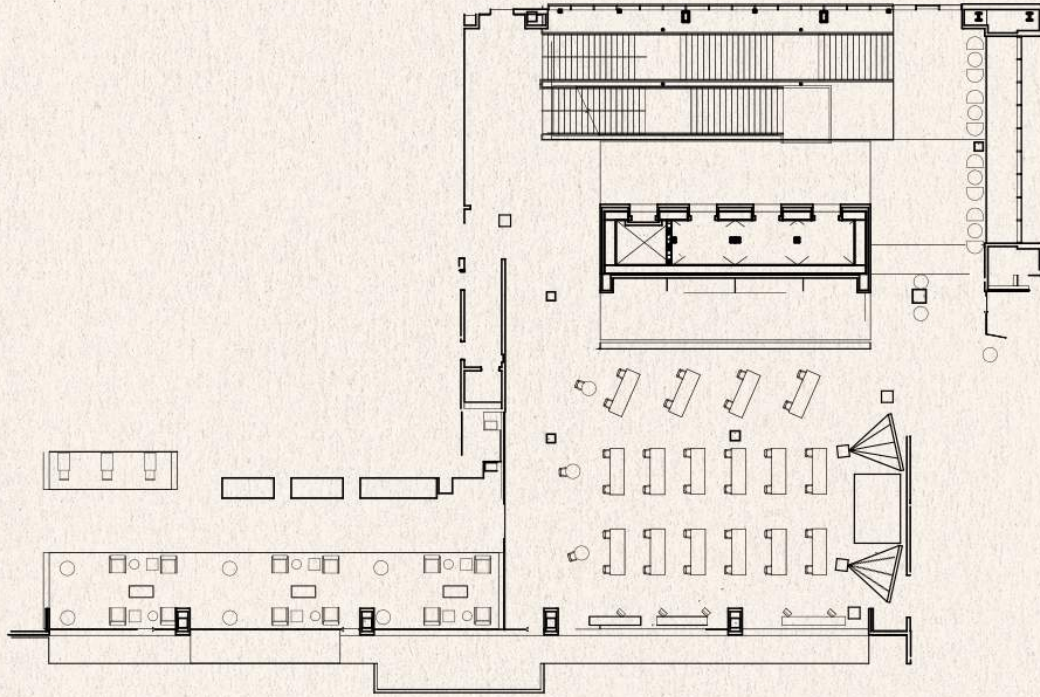


EMBRACE THE SPACE



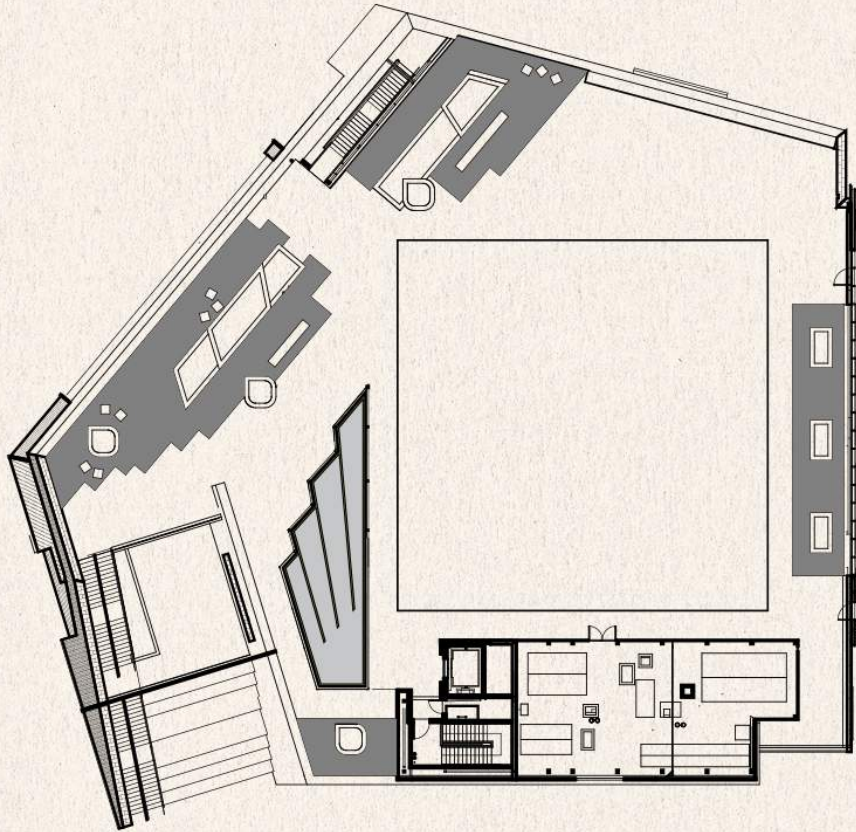
FOUNDERS CLUB

ROOFTOP CAN BE USED AS AN EXTENSION
CREATING A COMBINED INDOOR AND OUTDOOR EXPERIENCE.



FIELDS LA ROOFTOP

OPEN AIR

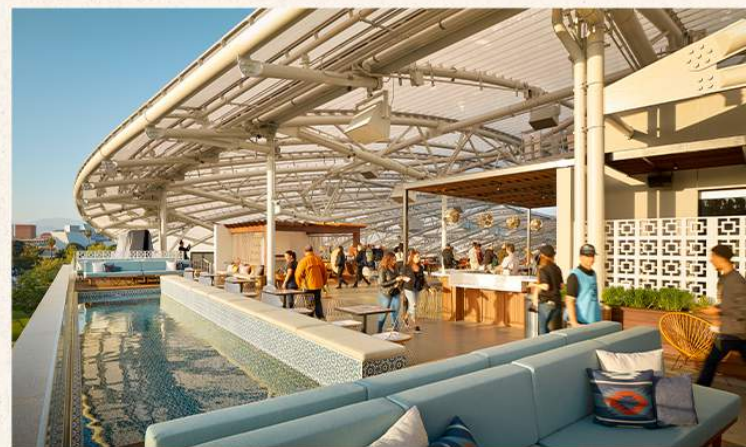
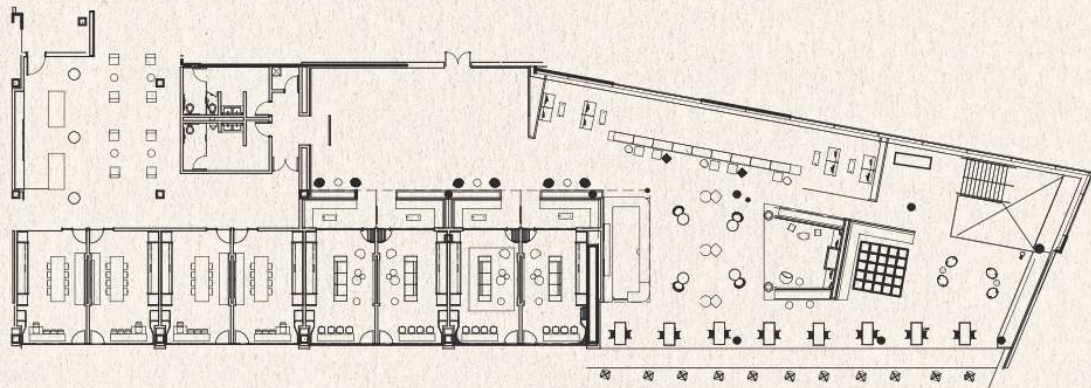


EMBRACE THE SPACE



SUNSET DECK

OPEN AIR



FIGUEROA CLUB

GLASS WALLS CAN BE RETRACTED CREATING A
COMBINED INDOOR AND OUTDOOR EXPERIENCE.

